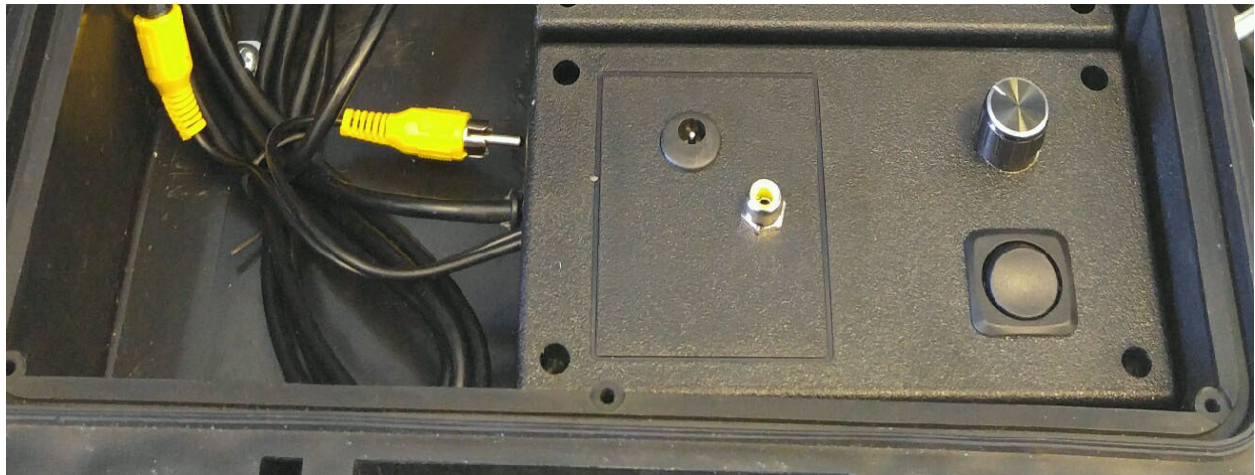


LOCATING YOUR CAMERA

Models: SECON-2000SM, SECON-MYCRO, SECON-2400SM

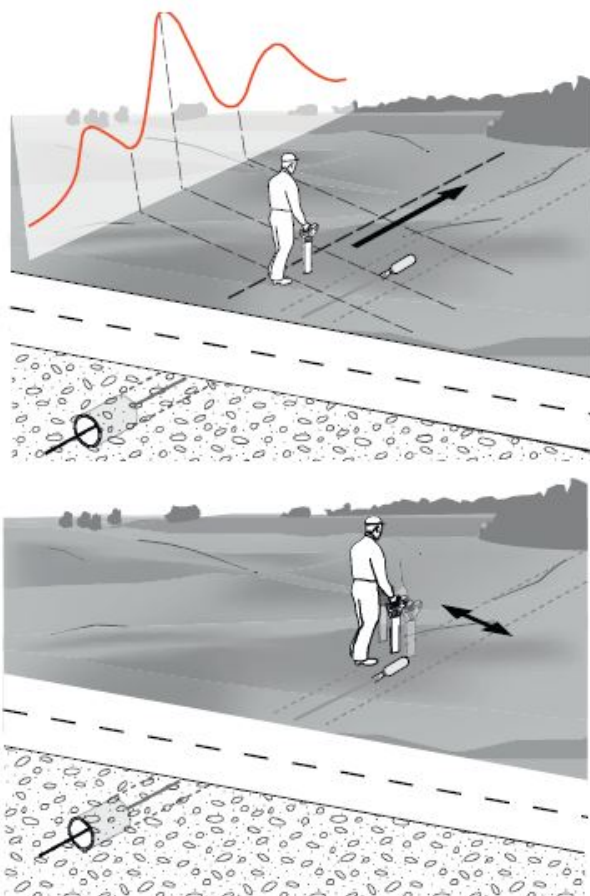
After you've pushed your camera through the pipe and have decided that you are at a point where you would like to determine the location and depth of your camera head, please follow these steps:

- 1) Turn on your "Sonde" by pressing the "Sonde" switch to the "on" position. (The "Sonde" toggle switch is located just below the dimmer control on your control panel)
 - a) Note: This will make you either lose video (blue screen) or get horizontal lines over your video – This is normal and means that your sonde is functioning.
 - b) Note: If you have a Digital On-Screen Footage Counter installed on you system, you will instead see a black screen with only the footage showing – This is normal and means that your sonde is functioning.



- 2) After your sonde is activated, it is time to use your locator. This page specifically shows how to use your PB550SL Digital Locator Wand in conjunction with your PB Series sewer camera.
 - a) Turn on your locator by depressing the yellow button in the handle grip.
 - i) NOTE: The locator will only remain on while this button is depressed.
 - ii) Letting go of the handle will automatically power off the locator.
 - b) You may change the active frequency by pressing the “F” button on the face of the locator.
 - i) NOTE: Each press will toggle the active frequency to the next on the list.
 - ii) 512Hz is the active frequency for your PB Series sewer camera system.
 - c) Facing the SAME DIRECTION as the pipe, begin to walk towards your camera as shown:

How to Locate a Service Using the Sonde



1. Walk in line with the suspected direction of travel observing the display. The signal strength indicator will rise and fall as you pass over the ghost signal at the back of the Sonde, the peak signal directly over the Sonde and the ghost signal at the front. The numeric signal strength indicator will display its highest value when detecting the peak signal.

2. Retrace your steps and position the locator directly over the peak signal. Move the locator left and right until the highest numeric reading is obtained. This reading will indicate the Sonde's precise location.



- d) The most important number to look at on the locator is the “peak” number on the lower-right of the screen. Once that number is at its highest possible point AT THAT JOB, then you are directly above the sonde and in-line with it.
- e) When directly above the sonde, press and HOLD DOWN the red “i” button on the face of the locator. After approximately 2 seconds, it will beep and show you your depth measurement.