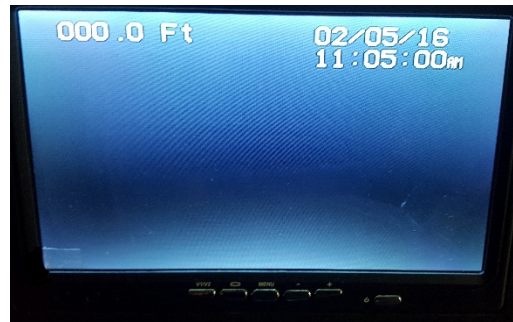


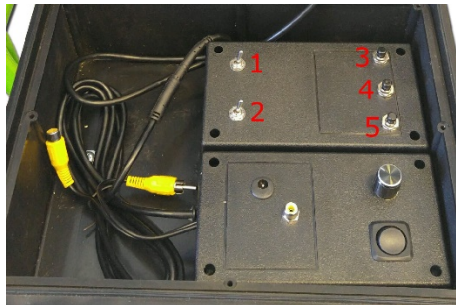
DIGITAL ON-SCREEN FOOTAGE COUNTER

Models: SECON-2000SM, SECON-MYCRO, SECON-2400SM

Your installed Digital On-Screen Footage Counter will display on the screen as follows:



The control panel for the Digital On-Screen Footage Counter is below your main controller:



The controls are as follows:

- 1) Hide Name – Will toggle the display of the name/phone number at the bottom-center of the screen on/off (if pre-programmed)
- 2) Hide Display – Will toggle the entire text overlay (date, time, count, name) on/off the screen
- 3) Reset – Will reset the on-screen footage count to 000.0
- 4) Increment – Use to set the date/time
- 5) Set/Move – Use to set the date/time

How to set the date/time:

- 1) Hold down the “Set/Move” button for approximately 7 seconds until “Set Month” appears on the screen
- 2) Press the “Increment” button to raise the value of the high-lighted field +1
- 3) Press the “Set/Move” button to move to the next field, in this order: Month, Date, Years, Hours, Minutes, Seconds, Hour Mode
 - a) Hour Mode – Allows for 12 hour clock (AM/PM) or 24 hour clock
 - b) Seconds – Pressing the “Increment” button while on “Seconds” will reset to zero seconds
 - c) Pressing the “Set/Move” button after the “Hour Mode” field will remove you from programming mode.